



## National Carbon Accounting Toolbox and Data Viewer

March 2005

The Australian Greenhouse Office, of the Department of the Environment and Heritage, has released a National Carbon Accounting Toolbox and Data Viewer.

These freely available products have great potential for project and regional natural resource management planning.

Developed in collaboration with the CSIRO, the Australian National University and Geoscience Australia and supported by NASA, they draw on the latest of scientific advancements.

The **National Carbon Accounting Toolbox** (available on CD) provides a set of tools for tracking greenhouse gas emissions and carbon stock changes from land use and management, including all supporting technical documentation.



The Toolbox will assist land managers to monitor emissions effectively and to identify more sustainable (less emissions intensive) land management practices.



The Toolbox provides access to the Full Carbon Accounting Model (FullCAM) that is used to construct Australia's national greenhouse gas emissions account for land based activities. FullCAM is derived from the National Carbon Accounting System – Australia's world leading land-based emissions accounting system.

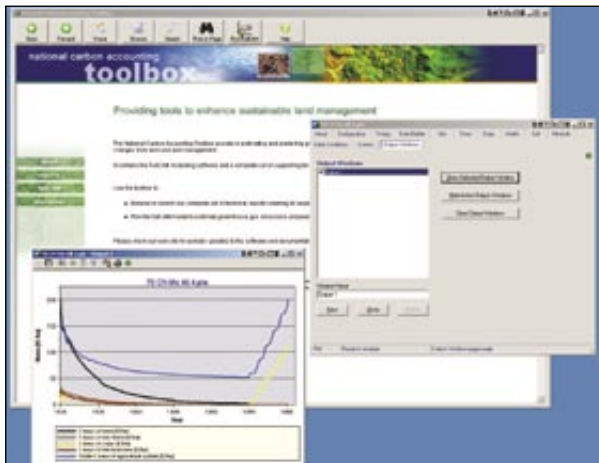
FullCAM accounts for emissions in major greenhouse gases (including carbon stocks), nitrogen cycling and human induced land use practices. Simply by modifying inputs, users may identify changes in emissions resulting from, for example:

- soil cultivation
- fire management
- fertiliser application
- climate variability and reliability

Through the Toolbox, users may access: carbon accounting data for a range of plant species and land management systems; historic climate records; and search all technical reports relating to development of the National Carbon Accounting System.



**Australian Government**  
Department of the  
Environment and Heritage  
Australian Greenhouse Office



For land managers, this will ensure their project or regional emissions accounts are determined on a similar basis to Australia's official recording of emissions for the land sector. It will also ensure they are able to make informed decisions on how their actions affect the atmosphere.

Coupled with the Toolbox is a **Data Viewer** (available on DVD) that contains a unique 30-year visual record of landscape and vegetation change in Australia since 1972, as seen through several national snapshots of satellite data.



Through the Data Viewer, users may zoom into any area of the continent and compare satellite images and climatic data between different years. This provides a quick and ready means for assessing change in forest cover over the last 30 years.



For instance, you may use the Data Viewer at the property or regional scale, to assess:

- where tree cover has changed?
- where tree planting has been most effective?
- which areas should be targeted for rehabilitation?
- which areas have experienced drought in recent times?

The Data Viewer also provides climate statistics for each region, including average climate trends (such as rainfall and temperature).

Information contained on the Data Viewer is based on the satellite imagery and data archives of the National Carbon Accounting System.

**For more information on the Toolbox and Data Viewer visit <http://www.greenhouse.gov.au/ncas>**

**To request a free copy of these products, email [ncas@greenhouse.gov.au](mailto:ncas@greenhouse.gov.au) with your postal details.**

